

唐響

伍卓賢曲
(2017修訂合奏版)

夢 ♩ = 62 ca. 稍自由

(氣聲) 4 1. *mf*

8 16 ♩ = 56

28

33

38

43 1. *mf*

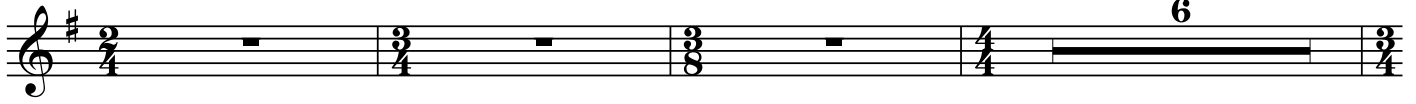
47

51 a2. 5

59



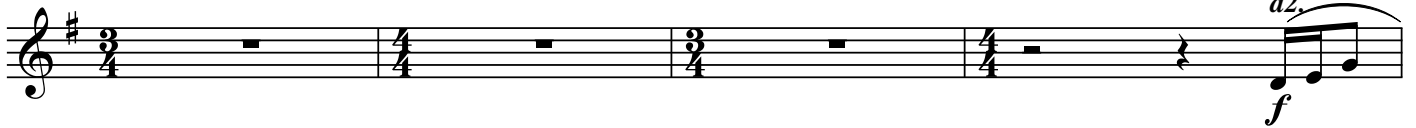
63



72



76



80



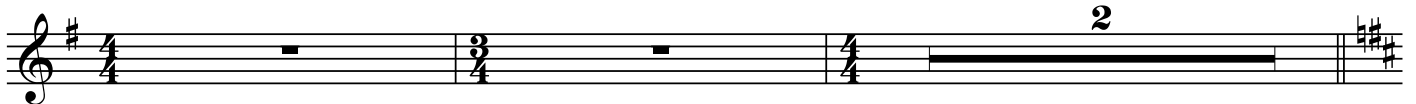
83



86



90



94 盛 ♩ = 78



106 a2.
ff

$\text{♩} = 156$

111 *ff* *f*

114 *ff* *fp* *ff*

117

120 36

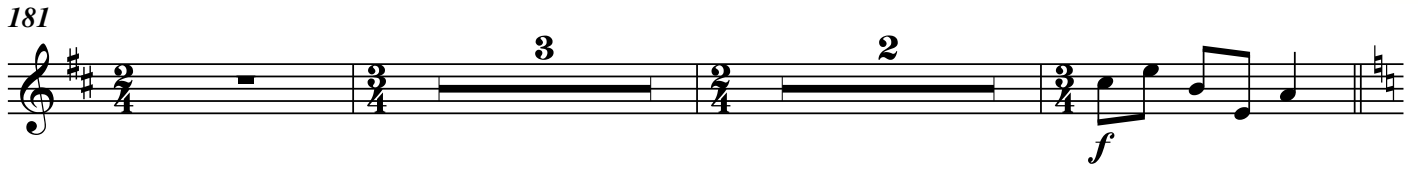
158 (高音笙)

164 (如歌地) *mf*

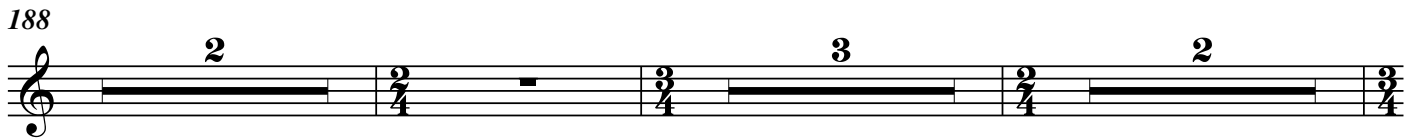
168 *f* *p*

172 3 2 3

181



188



196



205



213



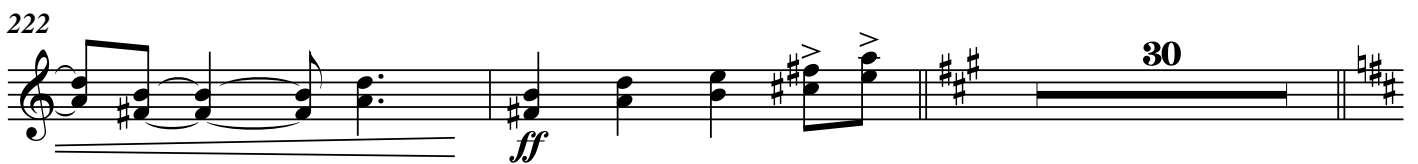
216



219



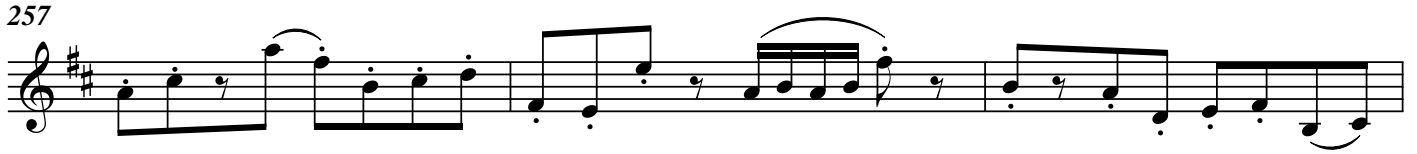
222



254



257



Musical notation for measure 257, featuring a treble clef, a key signature of two sharps (F# and C#), and a 4/4 time signature. The melody consists of eighth and quarter notes with various articulations.

260



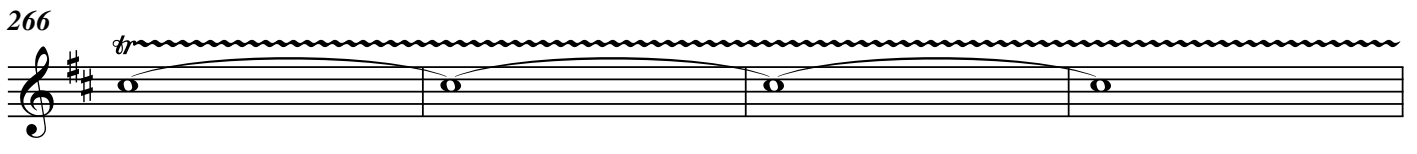
Musical notation for measure 260, continuing the melody with eighth and quarter notes and slurs.

263



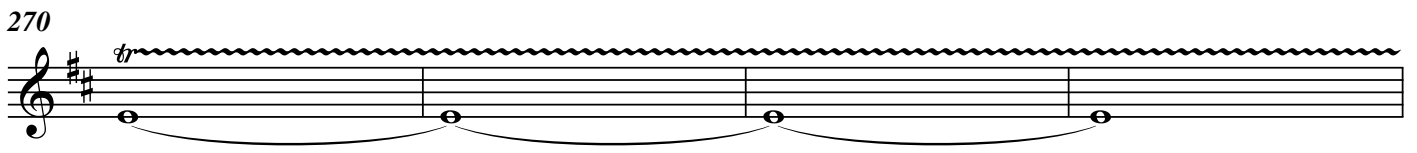
Musical notation for measure 263, including a trill (tr) and accents (>) on the final notes.

266



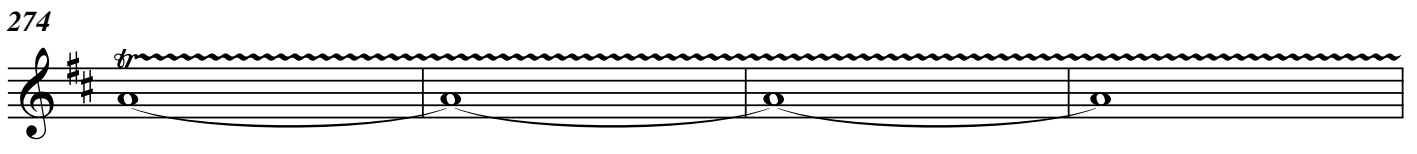
Musical notation for measure 266, showing a long note with a trill (tr) and a wavy line above it, indicating a tremolo effect.

270



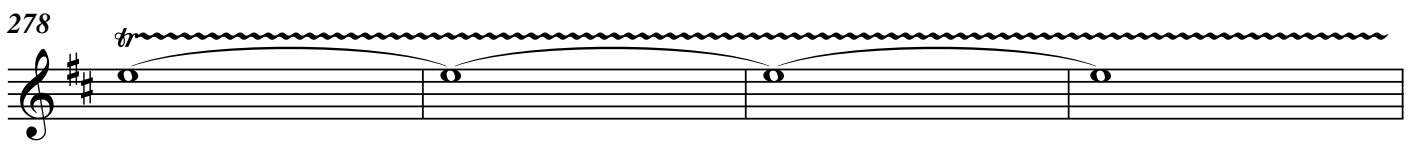
Musical notation for measure 270, featuring a long note with a trill (tr) and a wavy line above it.

274



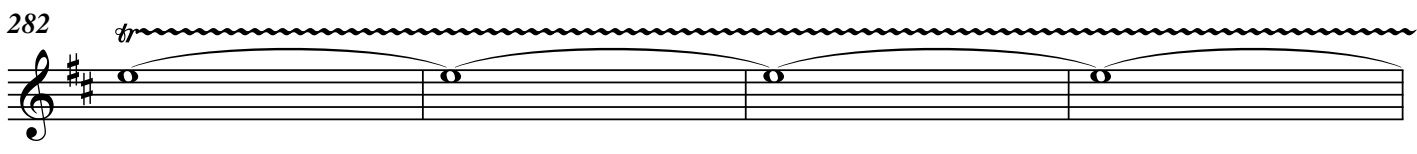
Musical notation for measure 274, showing a long note with a trill (tr) and a wavy line above it.

278



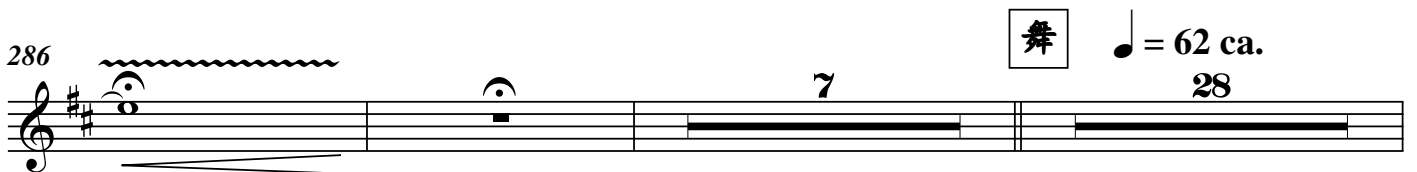
Musical notation for measure 278, featuring a long note with a trill (tr) and a wavy line above it.

282



Musical notation for measure 282, showing a long note with a trill (tr) and a wavy line above it.

286



Musical notation for measure 286, including a trill (tr), a fermata, and a 7-measure rest. A box containing the character '舞' (Dance) is positioned above the rest. The tempo is marked as ♩ = 62 ca. and the measure number 28 is indicated below the rest.

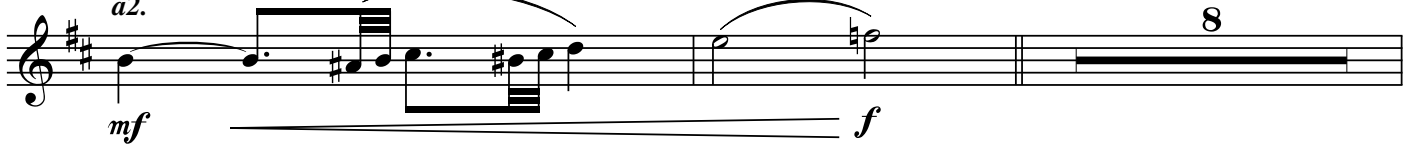
323 (二胡)



329



334



344



347



350



353



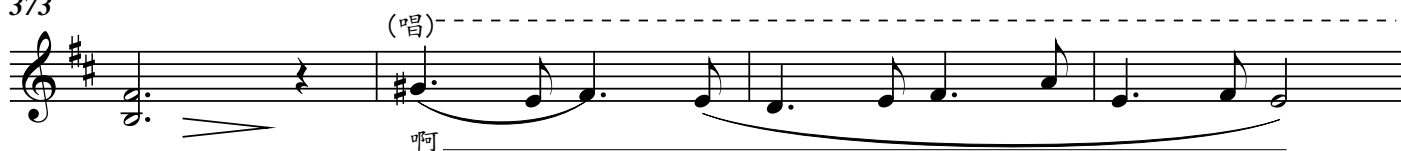
367



370



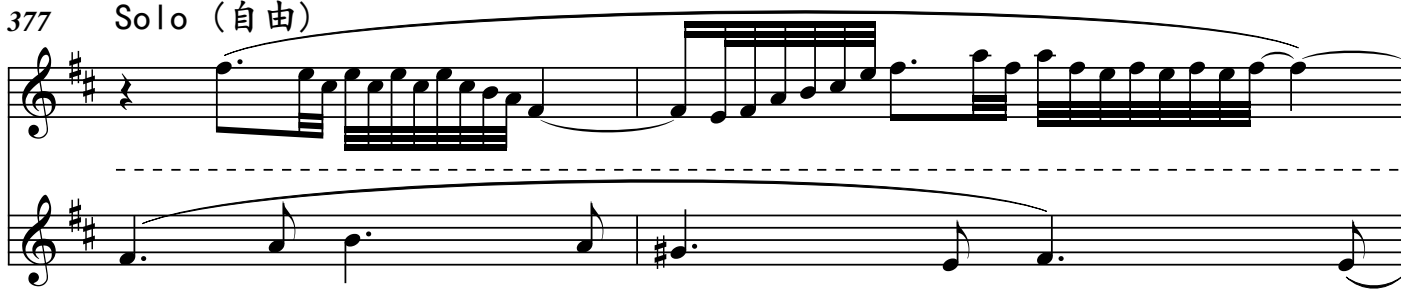
373



377 Solo (自由)

I 笛

II 唱

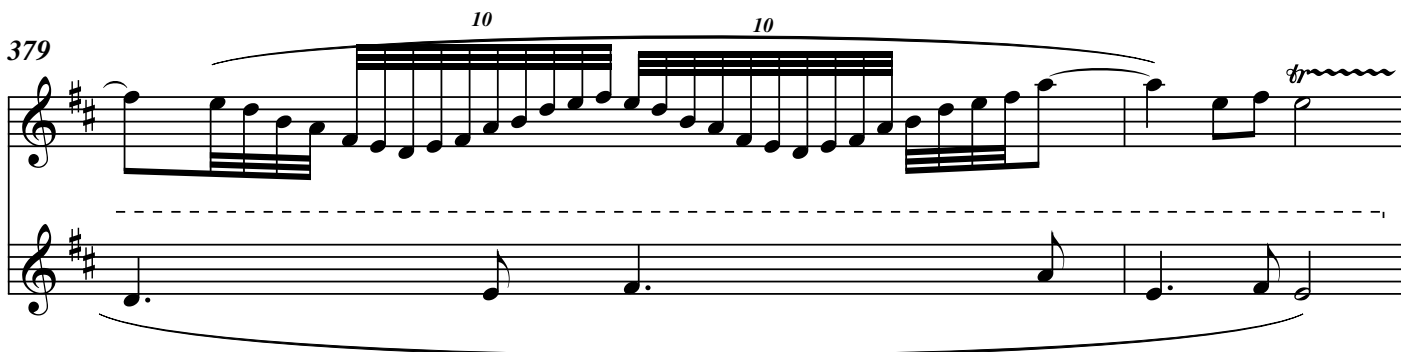


(笛1solo時, 笛2繼續唱旋律)

379

I 笛

II 唱



381



385



389 稍慢

