

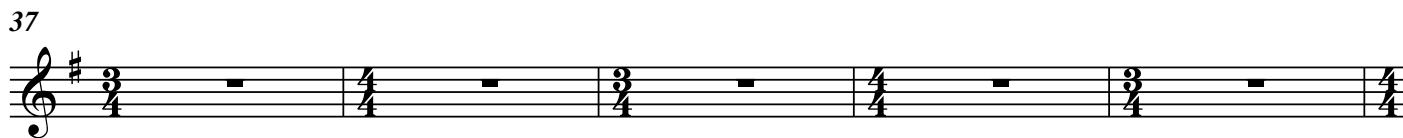
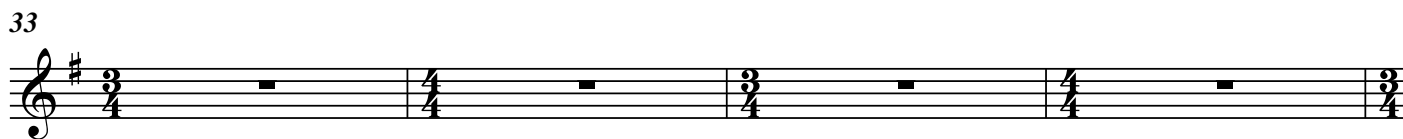
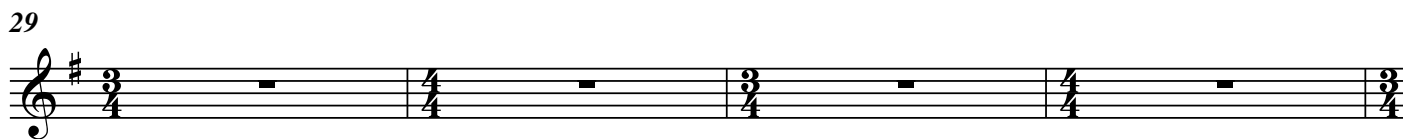
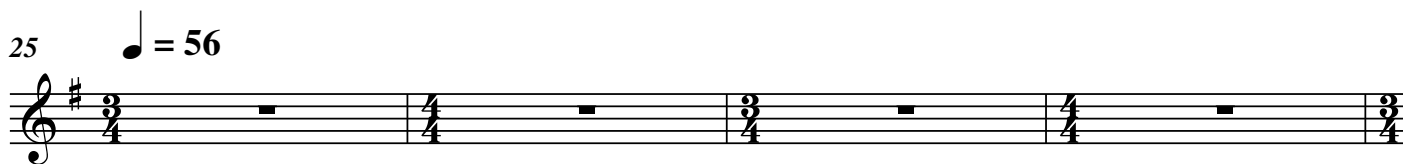
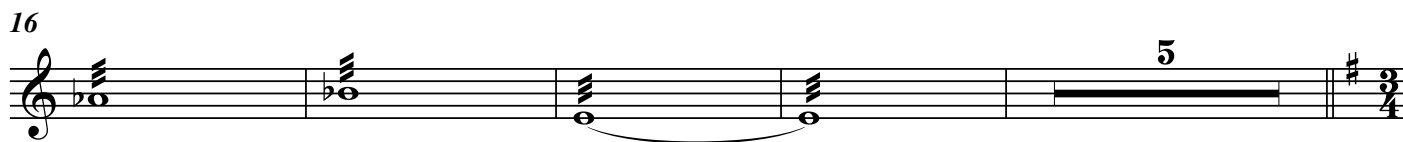
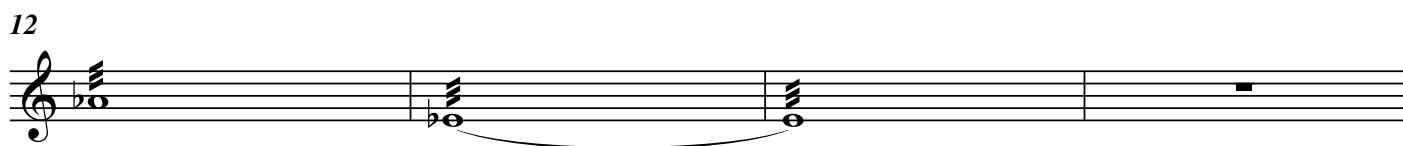
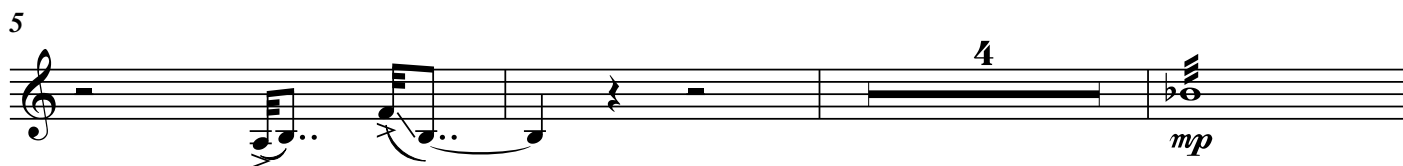
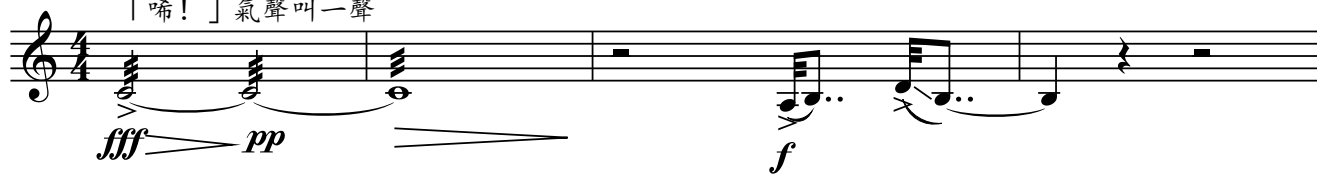
中胡

唐響

伍卓賢曲
(2017修訂合奏版)

夢 ♩ = 62 ca. 稍自由

「唏！」氣聲叫一聲



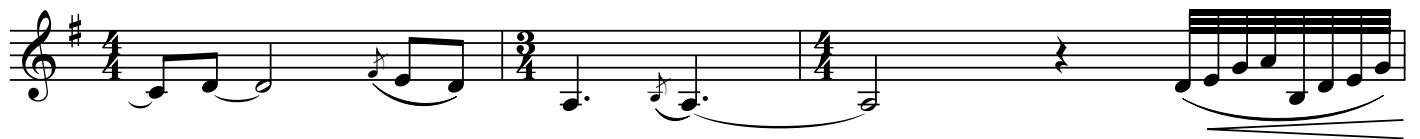
42



45



48



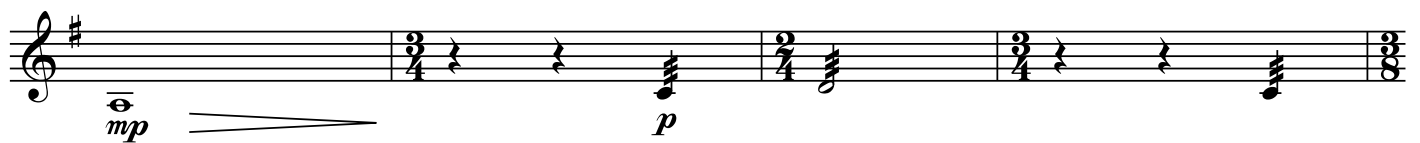
51



54



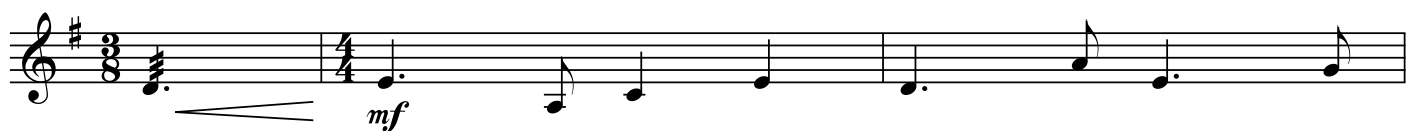
57



61



65



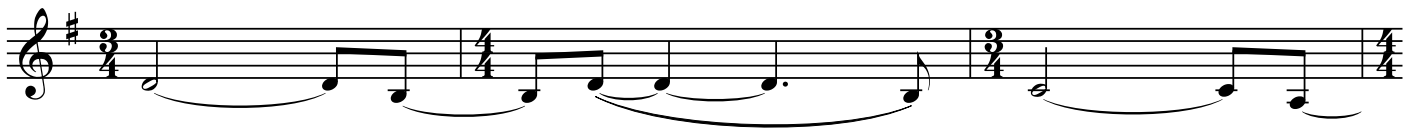
68



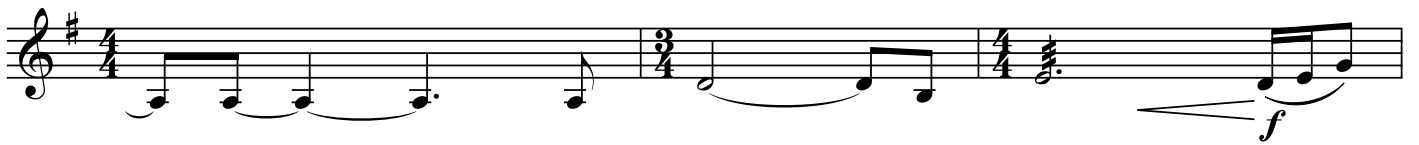
71



74



77



80



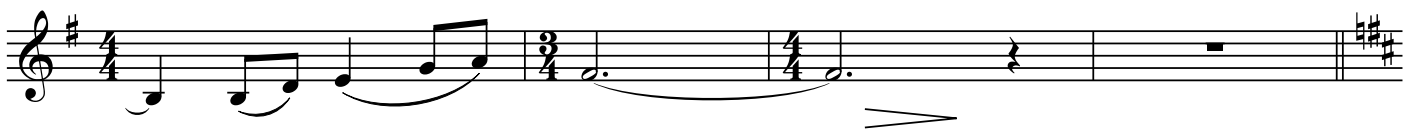
83



86



90



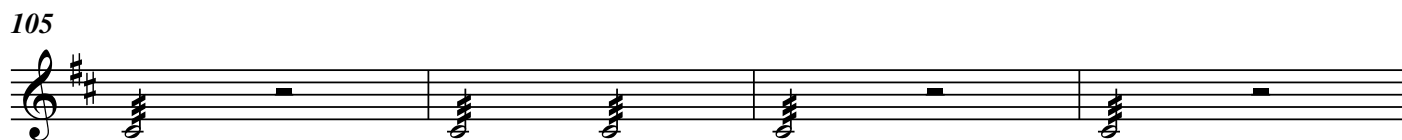
94 **盛** ♩ = 78

8 *Tutti* 103

f



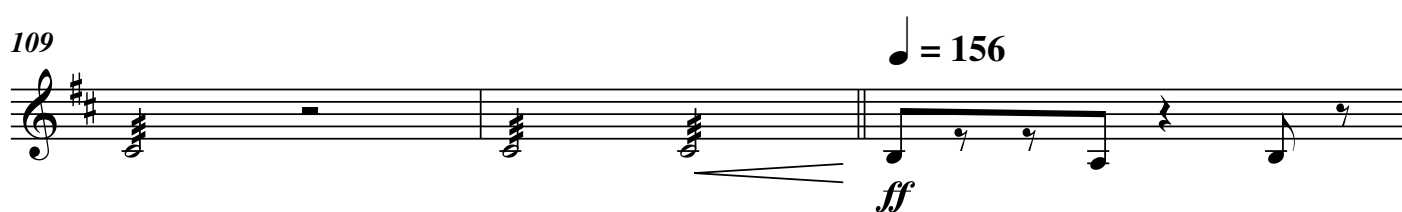
105



109

♩ = 156

ff



112



115

mf



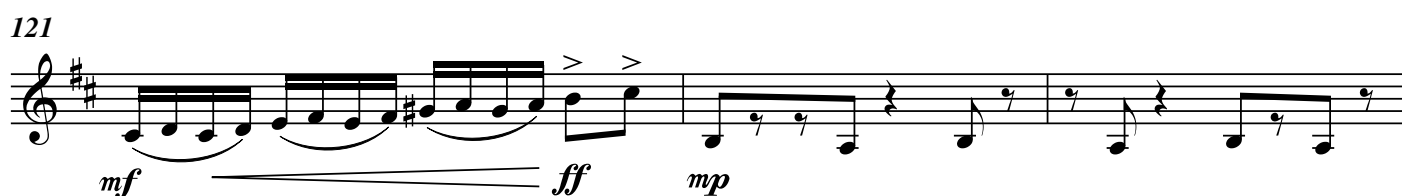
118

ff



121

mf *ff* *mp*



124



Musical notation for measure 124, featuring a treble clef, a key signature of one sharp (F#), and a 4/4 time signature. The notation consists of a single staff with a series of eighth and quarter notes, including rests, across four measures.

127



Musical notation for measure 127, featuring a treble clef, a key signature of one sharp (F#), and a 4/4 time signature. The notation consists of a single staff with a series of eighth and quarter notes, including rests, across four measures.

130



Musical notation for measure 130, featuring a treble clef, a key signature of one sharp (F#), and a 4/4 time signature. The notation consists of a single staff with a series of eighth and quarter notes, including rests, across four measures.

133



Musical notation for measure 133, featuring a treble clef, a key signature of one sharp (F#), and a 4/4 time signature. The notation consists of a single staff with a series of eighth and quarter notes, including rests, across four measures. The first measure is marked with a forte (*f*) dynamic, and the second measure is marked with a piano (*p*) dynamic. A slur covers the first two measures. The final measure contains a fermata and is marked with the number 7.

142

mf

146

150

154

158

162

166

f

170

mp

174

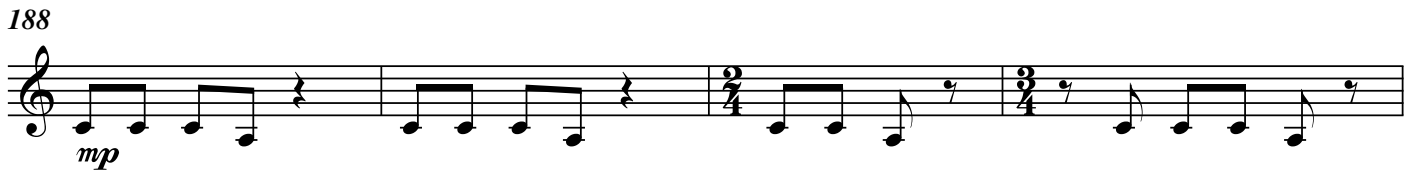
179



183



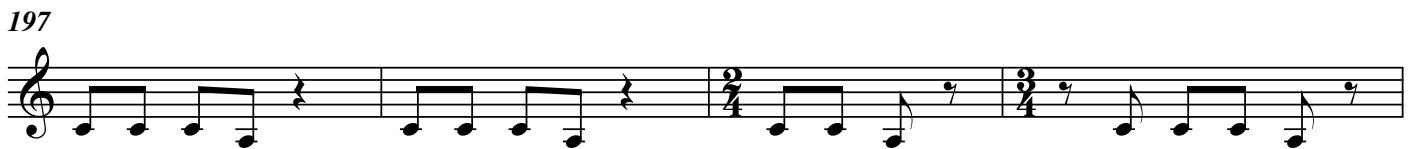
188



192



197



201



206



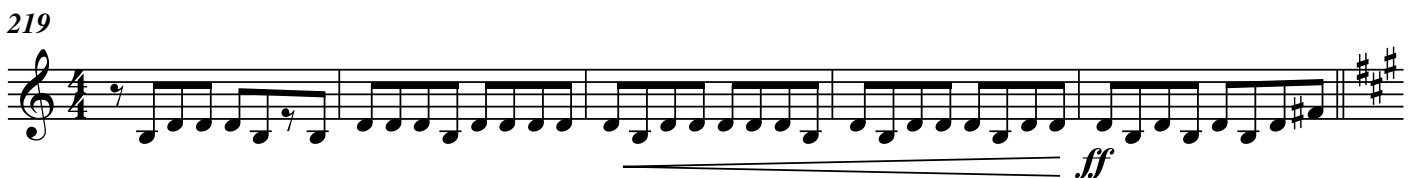
210



215



219



224

27

251 (琵琶+小阮)

(大鼓)



254

f



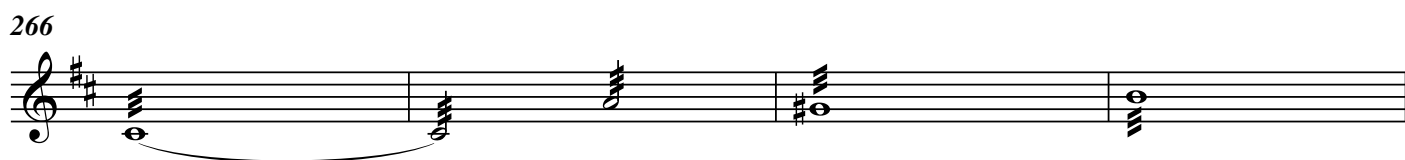
258



262



266



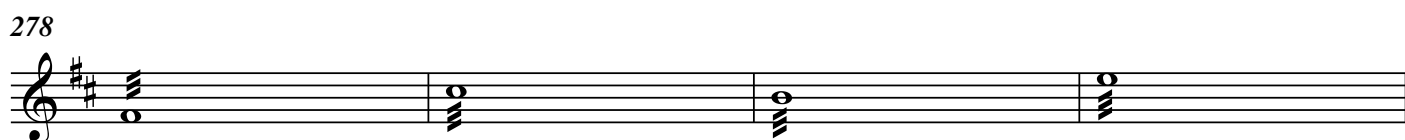
270



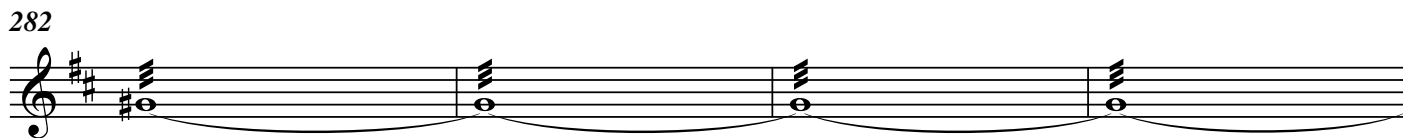
274



278

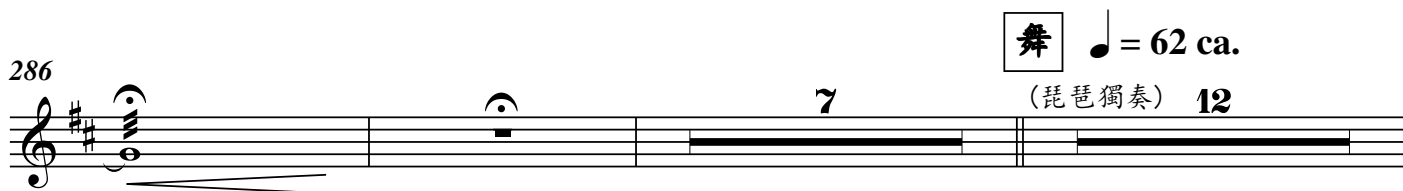


282



286

舞 ♩ = 62 ca.
(琵琶獨奏) 12



307 (革胡入) (琵琶獨奏)



315 *mp*

320 *mf*

324

328

332

336 *f*

340

344

348 稍加快 *ff*

353 同 ♩ = 56 *f*

357 稍加快



361 $\bullet = 66$

363

365 $\bullet = 69$

366

367

368

369

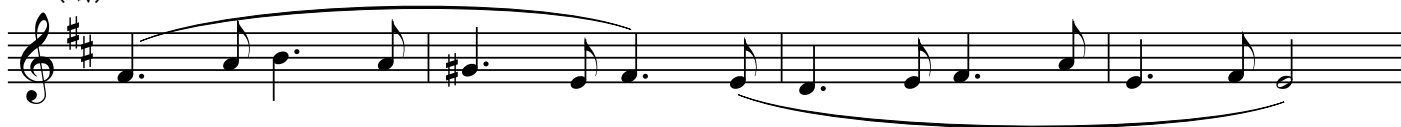
370

371

372

373 (唱)-----
啊

377 (唱)-



381



383



384



385



386



387



388



389

稍慢

