

# 大宅門寫意 - 蘆溝曉月

低音革胡

趙季平

慢板  $\text{♩} = 56$

*mf* *p* *mf*

6

4

*p*

14

*pizz.*

*mf*

20

*mf*

26

*arco*

*mp*

*mp*

32

$\text{♩} = 48$

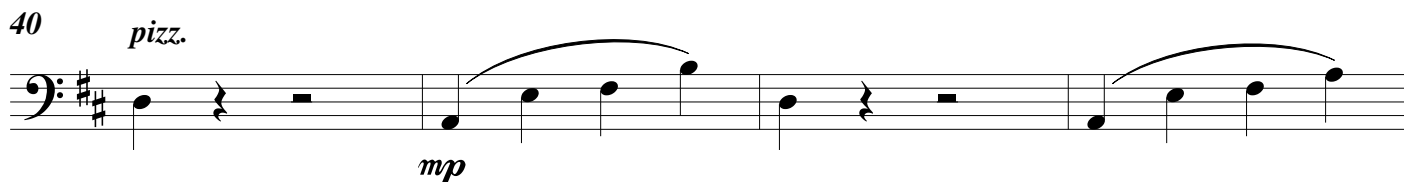
*p*

*p*

36

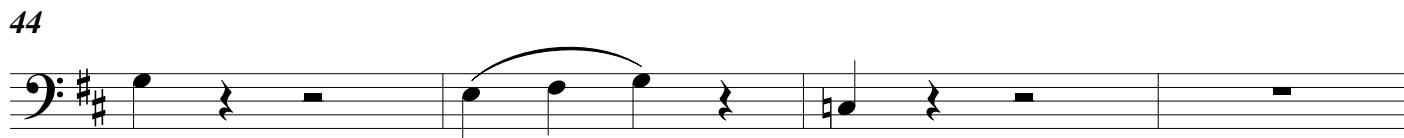
*mf*

40 *pizz.*

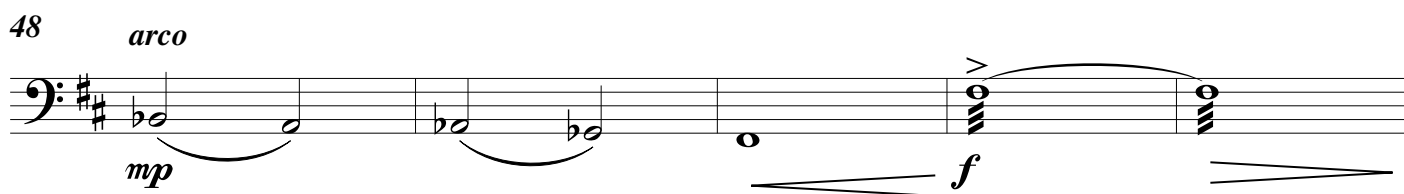


*mp*

44



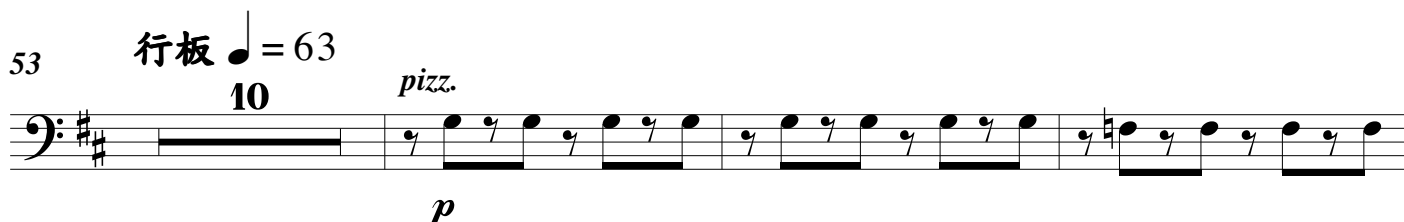
48 *arco*



*mp* *f*

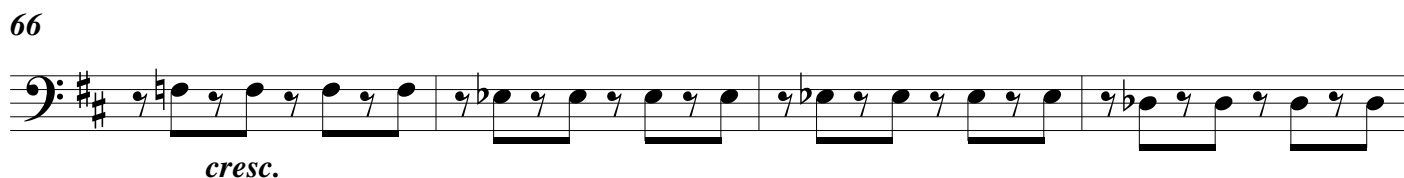
53 行板 ♩ = 63

10 *pizz.*



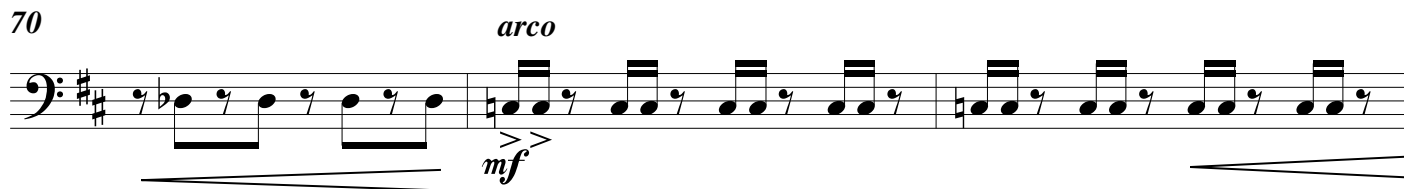
*p*

66



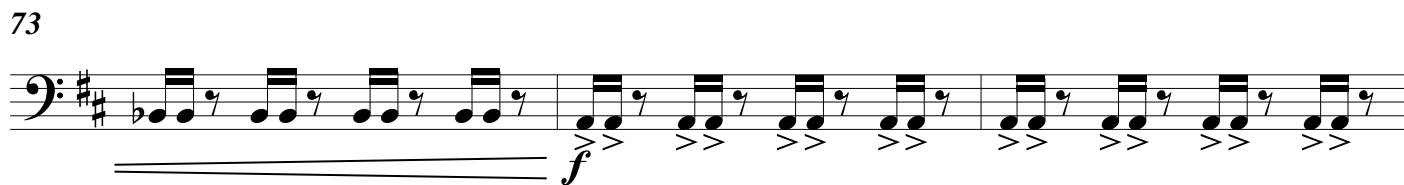
*cresc.*

70 *arco*



*mf*

73

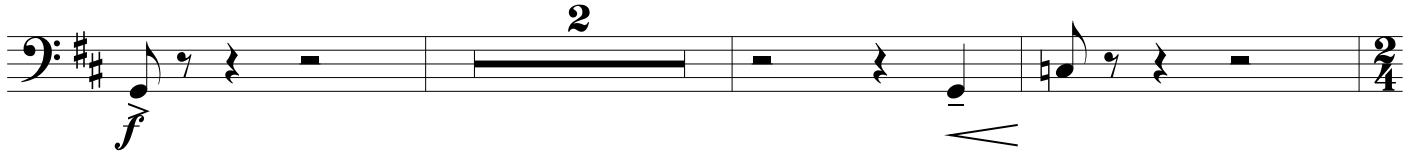


*f*

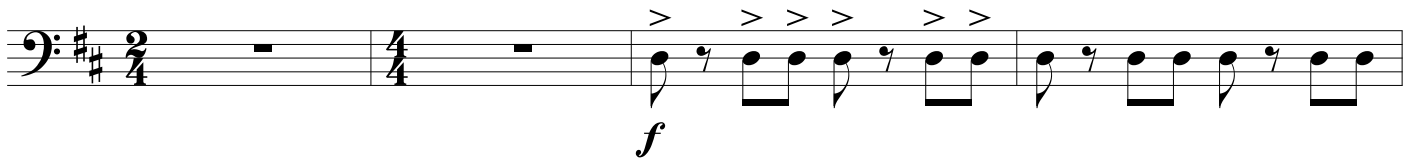
76



79  $\text{♩} = 144$  快板



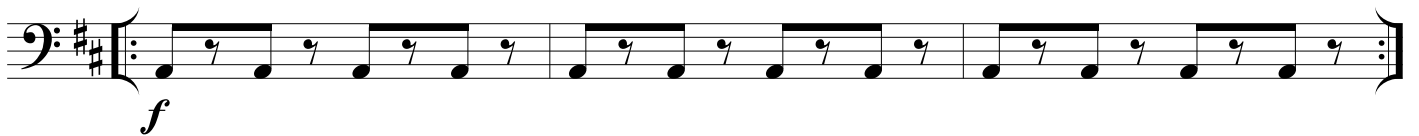
84



88



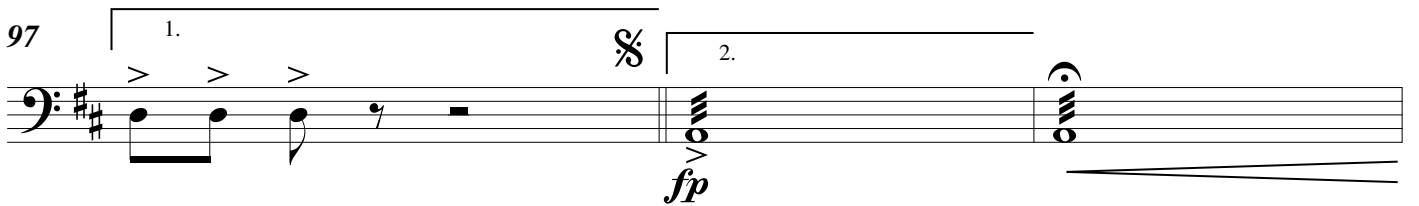
91



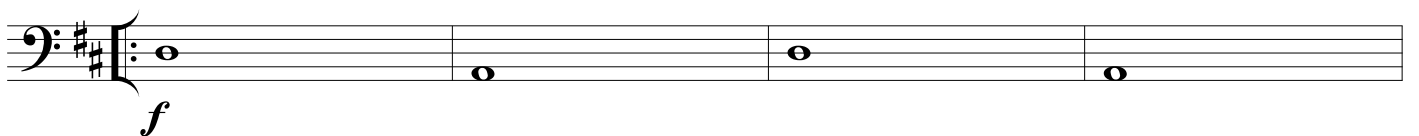
94



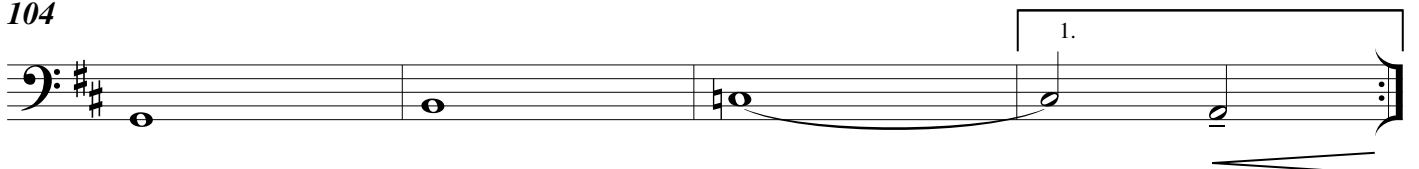
97



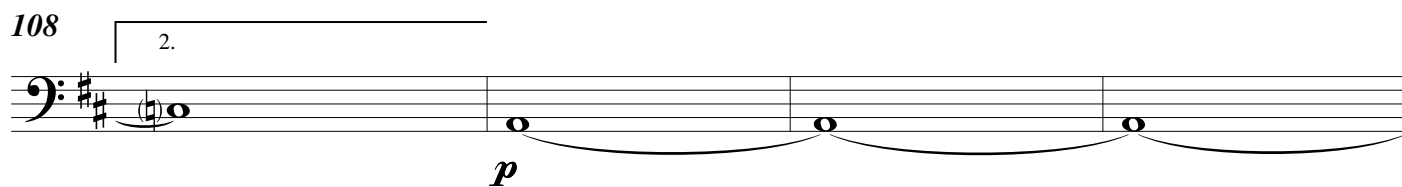
100 廣板  $\text{♩} = 48$



104

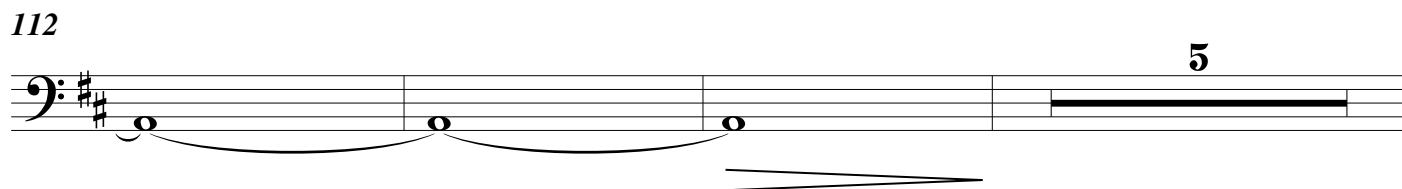


108



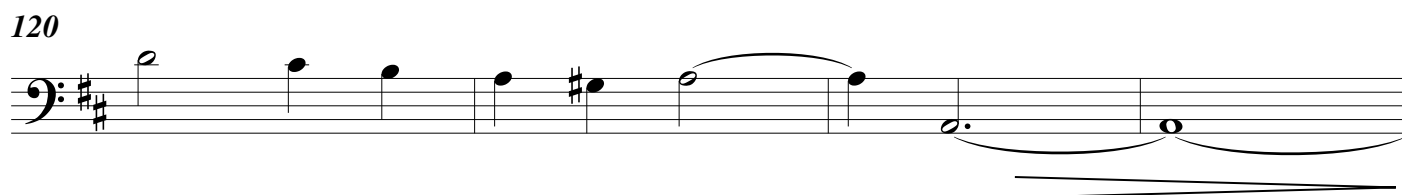
*p*

112



*p*

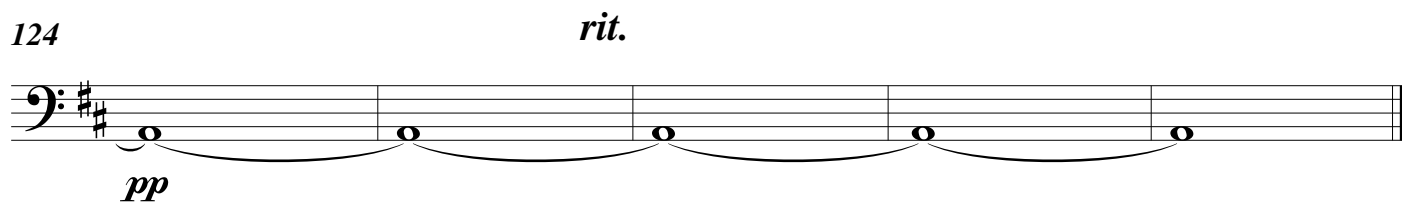
120



*p*

124

*rit.*



*pp*